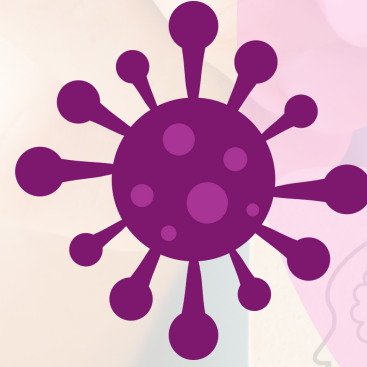




VISION MONKEYPOX DETECTION TEST



Vision Biyoteknoloji Arařtırma Geliřtirme
Laboratuvar Sistemleri Sanayi ve Ticaret Limited Őirketi
©2024 Vision Biyoteknoloji. All rights reserved.

For information and order: +90 2167840298 
info@visionbiotechnology.com 
www.visionbiotechnology.com 



*Quality
We Trust!*



Monkeypox Disease;

The disease is caused by the Monkeypox virus, a member of the Orthopoxvirus genus in the Poxviridae family.

Monkeypox is a viral zoonotic disease that occurs primarily in the tropical rainforests of Central and West Africa and is occasionally exported to other regions.

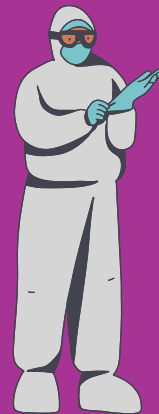
Monkeypox virus has two distinct genetic groups, Central African and West African. In humans, the Central African monkeypox virus is more severe and has a higher mortality rate than the West African virus. Monkeypox virus is most commonly transmitted to humans from wild animals such as rodents and primates, but human-to-human transmission can also occur.

Monkeypox virus is transmitted from one person to another through contact with contaminated materials such as lesions, body fluids, respiratory droplets, and bedding. Eating undercooked meat and other animal products from infected animals is a possible risk factor. It can also be transmitted from mother to fetus through the placenta.



Although the nest period of Monkeypox is generally known as 6 to 13 days, according to WHO, this period can vary from 5 to 21 days.

Precautions



- Patients suspected of having monkeypox should be isolated in a negative air pressure room as soon as possible. Personal protective equipment should be donned before entering the patient room and used for all patient contact. All personal protective equipment should be discarded before leaving the isolation room to which the patient was admitted.

VISION MONKEYPOX DETECTION TEST

Vision Monkeypox Detection PCR Kit is used for the detection of Monkeypox Virus in serum or lesion exudate samples using real-time PCR systems.

It provides qualitative detection of the rapidly spreading epidemic in the world.

We recommend using it with Vision Purify DNA Isolation Kit.

SAMPLING;

Follow the sample collection device instructions for proper collection methods. For MPOX detection, Skin lesion swab samples and respiratory tract swab samples should be taken with the standard sampling methods.



RT-PCR CONTENTS

- MPOX OLIGO MIX 1000 μ L
- MASTER MIX 500 μ L
- POSITIVE CONTROL 50 μ L
- NEGATIVE CONTROL 50 μ L